



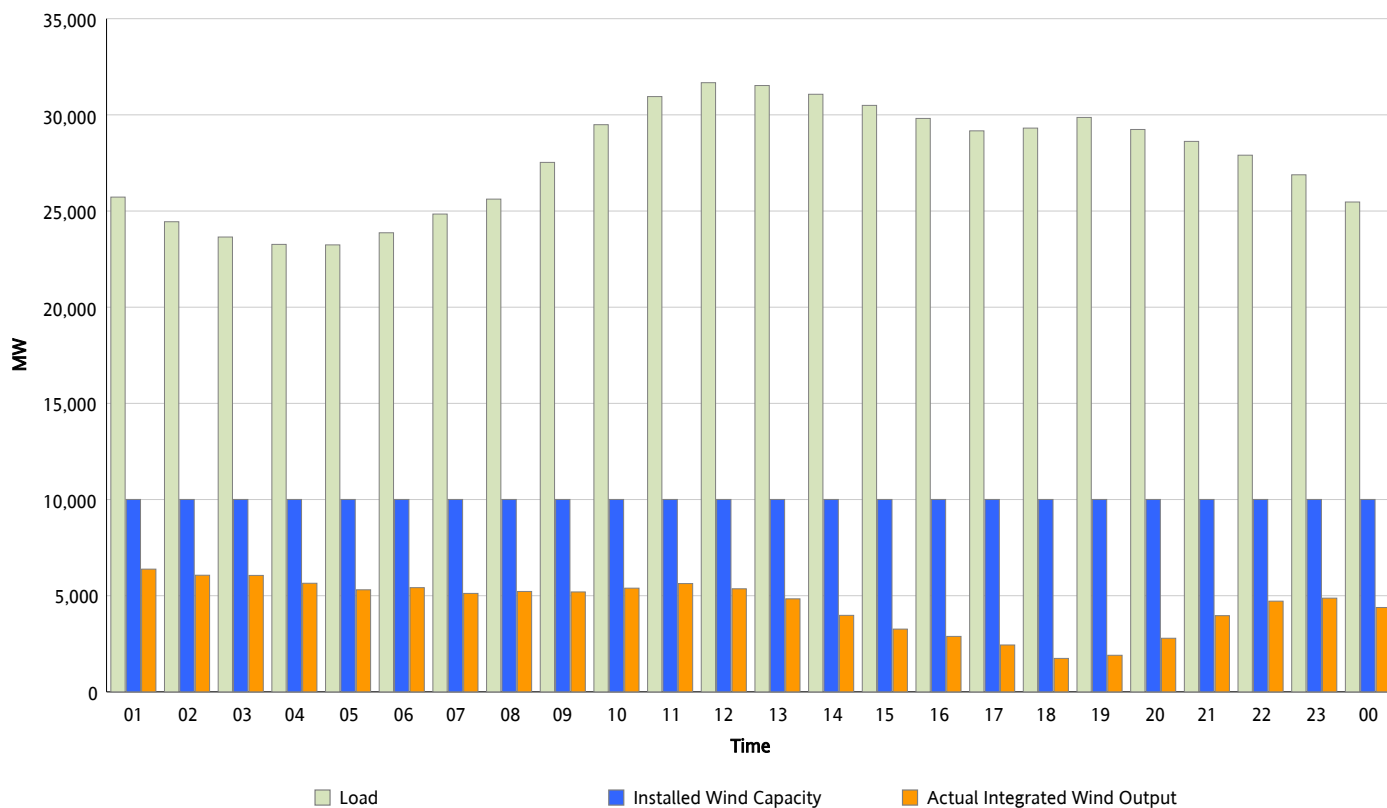
ERCOT Grid Operations

Wind Integration Report : 11/22/2012

Peak Load	31,673 MW
Load Peak Hour (HE)	12
Wind Over Peak	5,361 MW
Wind Record 11/10/12	8,521 MW
Max Wind Value*	6,598 MW
Wind Peak Time	00:00
Wind Integration %	24.81 %

Hourly Average Actual Load vs. Actual Wind Output

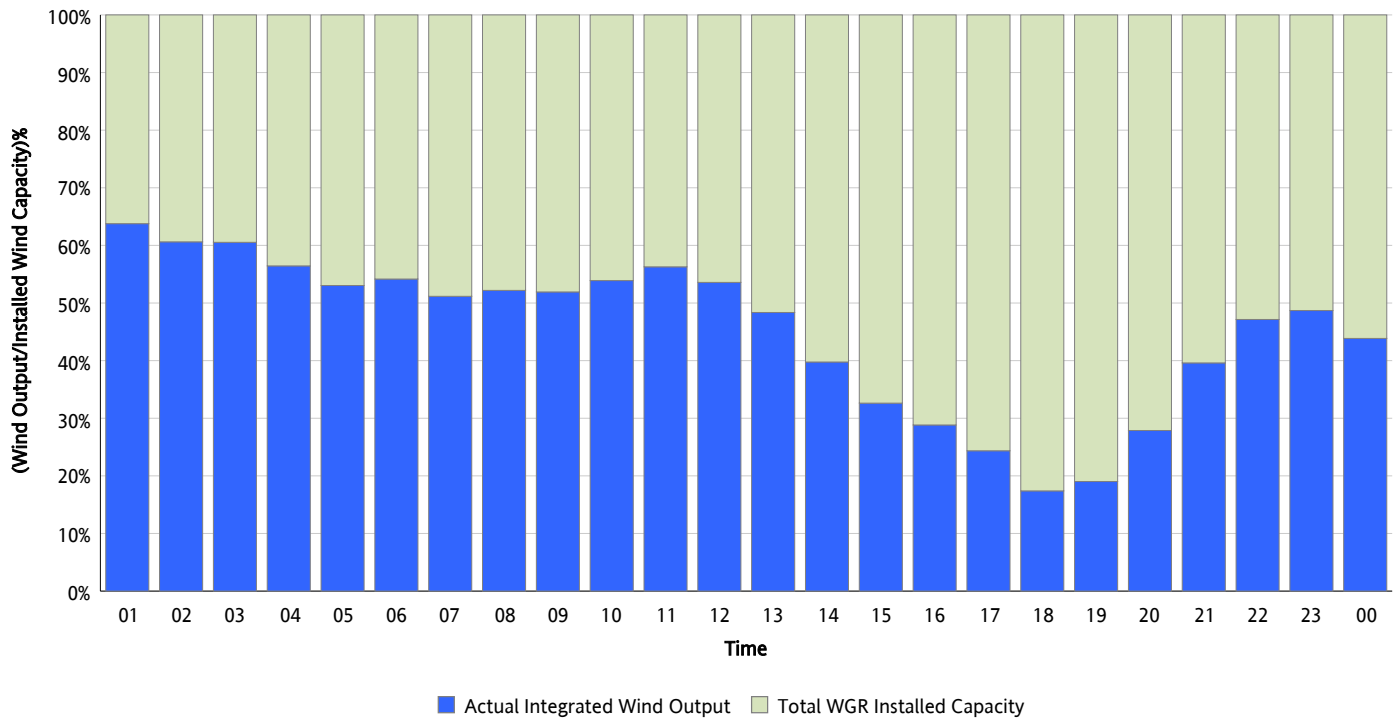
11/22/2012



* Wind Record and Wind Max represent instantaneous values and the rest of the values are integrated over the hour

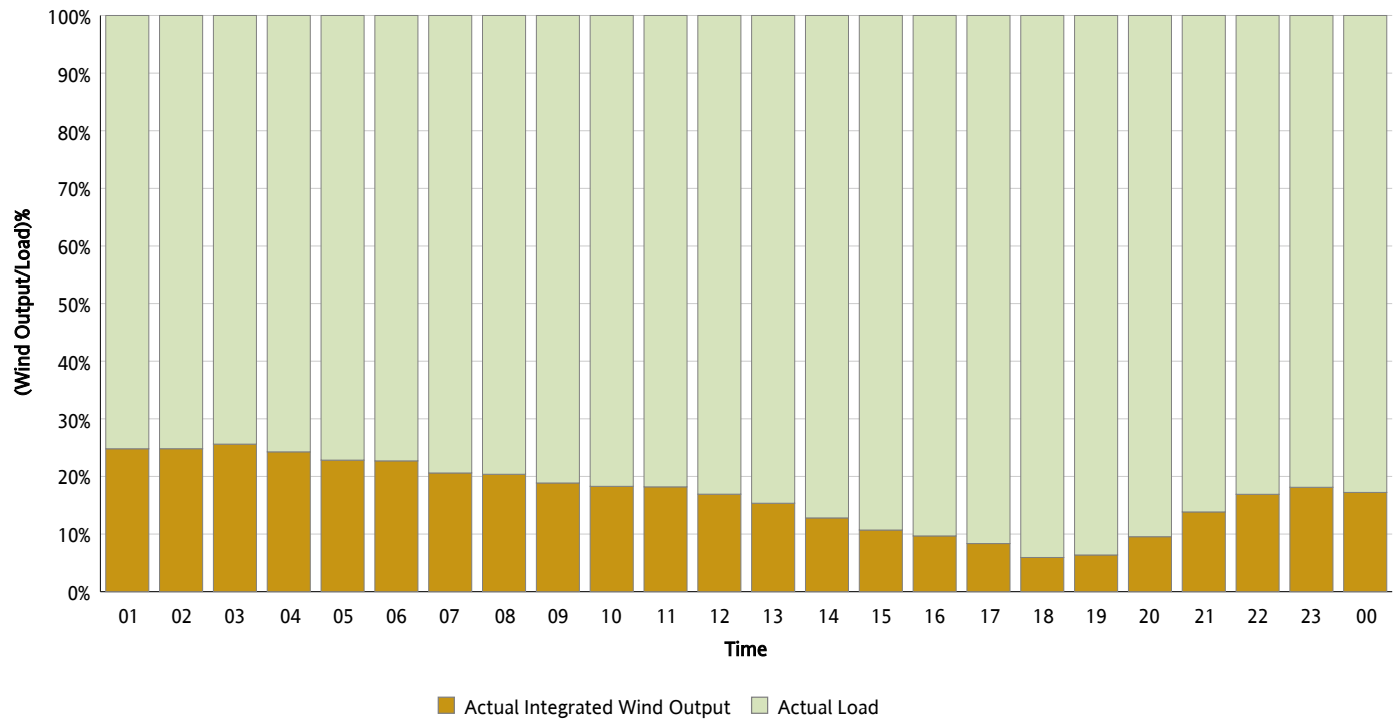
Actual Wind Output as a Percentage of the Total Installed Wind Capacity

11/22/2012



Actual Wind Output as a Percentage of the ERCOT Load

11/22/2012



ERCOT Load vs. Actual Wind Output

11/15/2012 - 11/22/2012

